



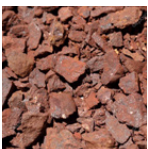
# ENDEAVOR® CONE CRUSHER

Secondary or Tertiary Crusher For Aggregate and Mining Applications.

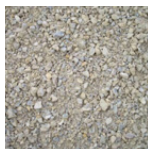
## FEATURES

- » Standard 2-year/6,000 hr warranty protects costliest components.
- » Backed by eager service team who respond quickly.
- » High-grade steel components, which exceed industry standards.
- » Committed to large inventory of parts for fast deliveries.

## APPLICATIONS



Ore/Hard  
Rock Mining



Quarried  
Stone



River  
Gravel



Recycle  
Concrete



Fractured  
Gravel

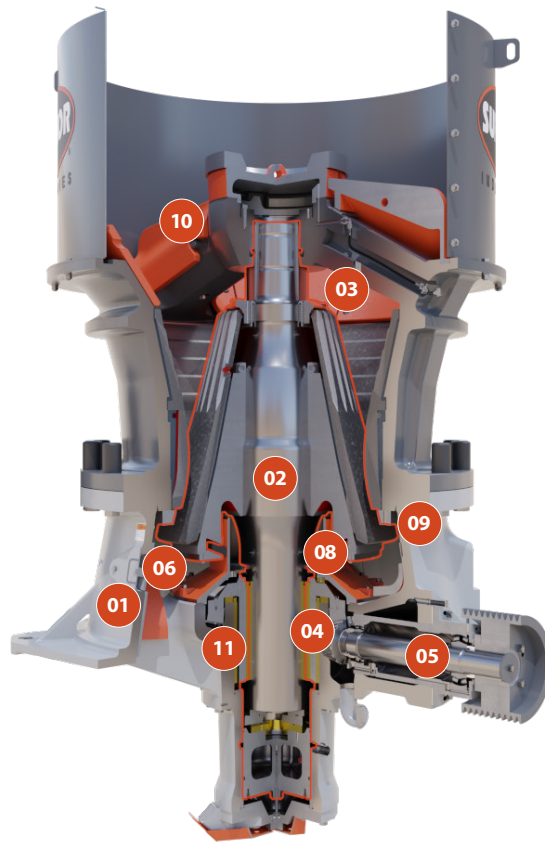


Cubical  
products



Super Pave  
Products

Wheeled   
Stationary 



**01/ MAIN FRAME ACCESS INSPECTION PORTS**

Two ports provide easy inspection access to lower main frame.

**02/ FLOATING SHAFT DESIGN**

Single cylinder to maintain CSS instead of multiple.

**03/ UNIVERSAL CRUSHING CHAMBER**

Application flexibility from coarse to fine crushing.

**04/ SPIRAL BEVEL GEAR SET**

Less vibration and noise than straight bevel gears.

**05/ INTEGRAL COUNTERSHAFT HOUSING**

No countershaft box seal to maintain. Countershaft box out of the flow of discharge material.

**06/ ENCLOSED ECCENTRIC ASSEMBLY WITH BOLT-ON DUST SHIELD**

Protects assembly from wear.

**07/ FULLY INTERGRATED LUBRICATION & HYDRAULIC SYSTEM**

Designed and sized to ensure trouble free operation for each model. [Not shown]

**08/ COMPOSITE DUST SEALS**

Provides superior performance and reliability.

**09/ ONE PIECE CAST TOP AND BOTTOM SHELL**

Greater strength.

**10/ CONSISTENT FEED OPENING THROUGHOUT THE LIFE OF THE LINER**

No adjustment to feed needed based on liner wear.

**11/ VARIABLE ECCENTRIC THROW**

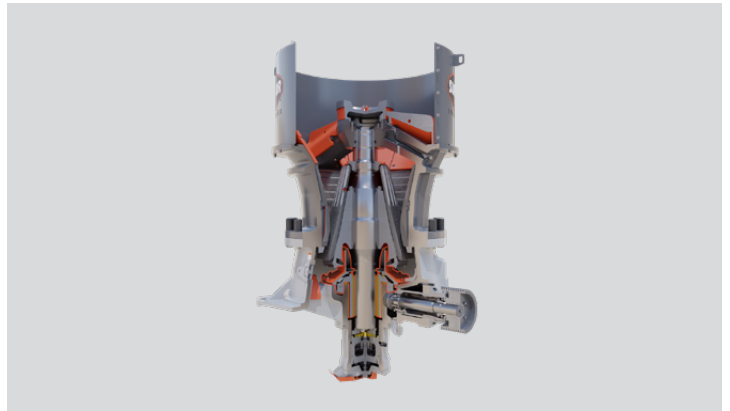
Allows end-user to adjust the stroke of the machine to meet application needs.

## HIGHLIGHTS



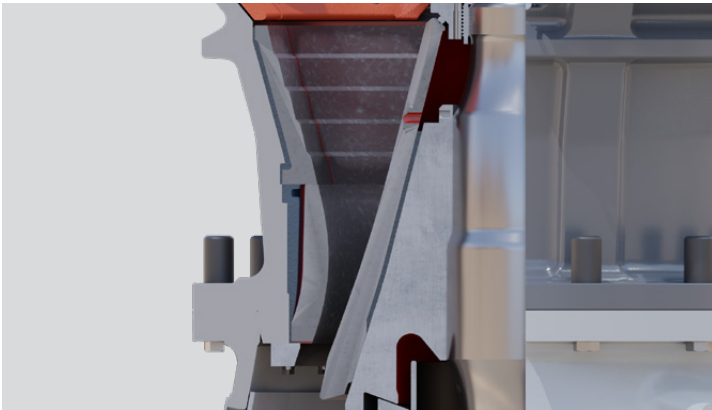
### MAINFRAME INSPECTION DOOR

- » Two ports provide easy inspection access to lower main frame



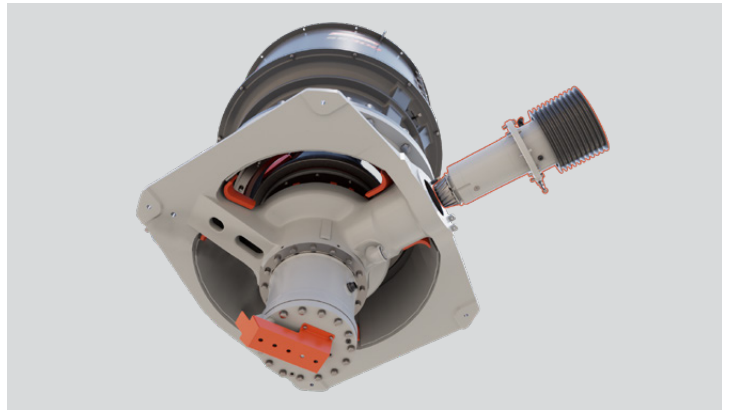
### ENCLOSED ECCENTRIC & DUST COVER

- » Protects assembly from wear



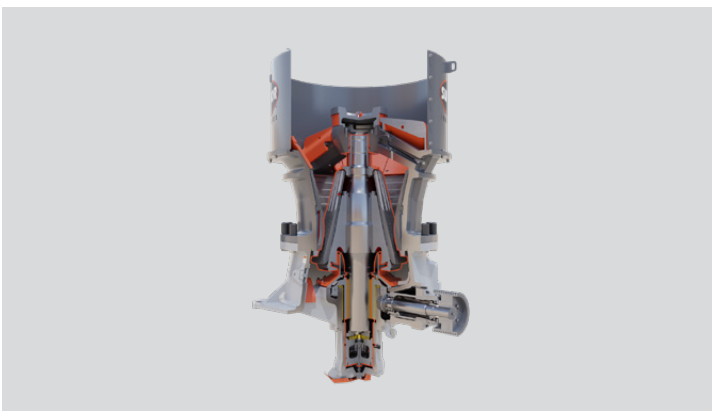
### UNIVERSAL CRUSHING CHAMBER

- » Application flexibility from secondary to tertiary



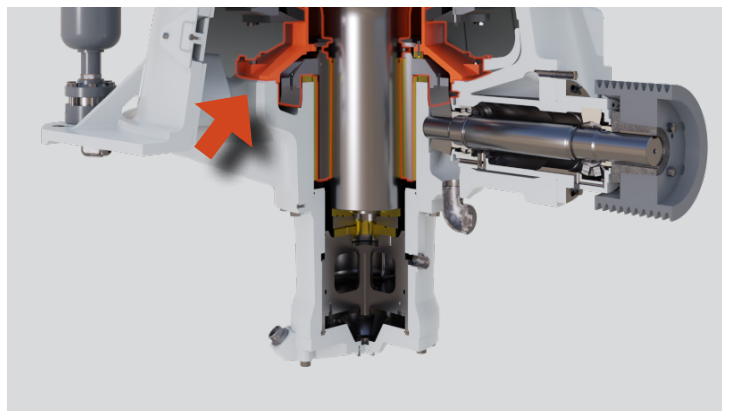
### INTEGRAL COUNTERSHAFT HOUSING

- » No countershaft box seal to maintain and countershaft box is located out of the flow of discharge material



### FLOATING SHAFT DESIGN

- » Single cylinder maintains CSS and allows chamber clearing during tramp event



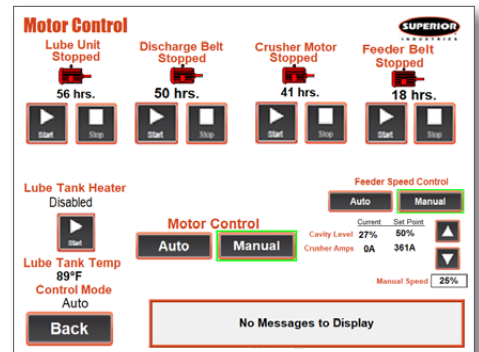
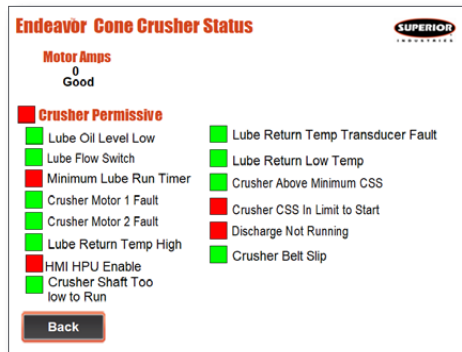
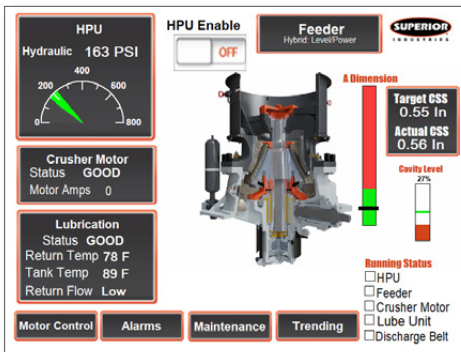
### ADJUSTABLE STROKE

- » Variable eccentric throw allows end user to adjust the stroke of the machine



- » One button auto-start or auto-stop motor control
- » Startup and shutdown system in correct sequence every time
- » No lengthy training, learn operation in minutes due to simple screen layout
- » Automatically maintain optimum production conditions
- » Alarms alert operators for conditions that need to be addressed
- » All critical data listed on operators page
- » Pre-assembled wiring for plug-and-play installation
- » In-House design means fast support and custom programs
- » Auto Level, power or adjust feature to maximize the crusher efficiency
- » Wintermode maintains lube temperature while crusher is not running

ASK YOUR SALES REPRESENTATIVE FOR AN IN-DEPTH PRESENTATION TO EXPERIENCE ALL THE CAPABILITIES OF VANTAGE® AUTOMATION.



**CAPABILITIES**

**TRACK TO IMPROVE EFFICIENCY**

- » Motor amperage draw
- » Closed side setting
- » Lube system health
- » Hydraulic health
- » History of alarms

**ALARMS FOR HARMFUL CONDITIONS**

- » Lube temp, pressure, and level
- » Hydraulic temp and level
- » Tramp pressures
- » Tramp events
- » Over amperage

**PRECISE CONTROL**

- » Auto feed control
  - » Auto level
  - » Auto power
  - » Auto setting
- » Lube heaters - Scheduled start time
- » Lube pump - Scheduled pump start
- » Hydraulic pump
- » Oil cooler
- » Drive motor
- » Feeder motor - VFD signal-ready

**SPECIFICATIONS**

**ENDEAVOR CONE CRUSHER GENERAL SPECIFICATIONS**

Model	Head Diameter		Weight		Recommended HP		Max Feed Opening		Speed	CSS	
	mm	in	kg	lbs	kW	hp	mm	in	rpm	mm	in
ST300	1,090	42-15/16	15,870	34,980	225	300	210	8-1/4	1,438	8 - 48	5/16 to 1-7/8
SS300	980	38-9/16	19,980	44,050	225	300	450	17-3/4	1,354	25 - 54	1 to 2-1/8
ST400	1,330	52-9/25	27,440	60,500	300	400	344	13-1/2	1,188	13 - 51	1/2 to 2
SS400	1,138	44-4/5	34,930	77,000	300	400	700	27-1/2	1,060	29 - 83	1-1/8 to 3-1/4

**PERCENT PASSING**

Model	CSS (SIEVE SIZE)		1.142" (29mm)	1 1/4" (32mm)	1.378" (35mm)	1 1/2" (38.1mm)	1.614" (41mm)	1.732" (44mm)	1.89" (48mm)	2" (50.8mm)
	in	mm	% Passing	% Passing	% Passing	% Passing	% Passing	% Passing	% Passing	% Passing
Endeavor Secondary Models	4.724"	120								
	3.937"	100							100	100
	3.150"	80					100	100	97	95
	2.756"	70			100	100	98	96	93	90
	2.362"	60	100	100	99	98	94	90	84	79
	1.969"	50	99	98	94	89	82	74	69	64
	1.575"	40	92	87	81	74	67	59	53	48
	1.181"	30	75	67	61	56	49	43	38	34
	0.984"	25	63	56	49	43	38	34	30	27
	0.787"	20	49	43	39	35	30	26	23	21
	0.591"	15	37	33	30	27	23	20	18	17
	0.394"	10	24	21	19	17	15	14	13	12
	0.236"	6	17	15	13	12	11	10	9.3	8.9
	#4	4	13	12	11	10	8.9	7.9	7.3	6.9
	#8	2	10	8.9	8.4	7.9	7.4	6.9	6.3	5.9
	#16	1	6.3	5.9	5.8	5.5	5.3	5	4.7	4.5

**PERCENT PASSING**

Model	CSS (SIEVE SIZE)		.630" (16mm)	.748" (19mm)	.867" (22mm)	.984" (25mm)
	in	mm	% Passing	% Passing	% Passing	% Passing
Endeavor Tertiary Models	5"	127				
	3.937"	100				
	3.150"	80				
	2.756"	70				
	2.362"	60				
	1.969"	50				
	1.575"	40				
	1.181"	30		100	96	91
	0.984"	25	100	97	89	82
	0.787"	20	95	86	74	66
	0.591"	15	81	68	56	48
	0.394"	10	54	43	35	30
	0.236"	6	34	27	22	19
	#4	4	24	19	16	14
	#8	2	15	12	10	8.9
	#16	1	10	8.9	7.9	6.9

Projected crusher gradings and capacities are based on a material having a work index of 12-14, with a bulk density of 100 lbs/ft<sup>3</sup> (1.6 mt/m<sup>3</sup>). The feed grading must contain less than 20% passing the css for secondary and 10% passing the css for tertiary cone crushers. The crusher drive assemblies are to be maintained in good working order with the ability to apply all available horsepower without drive belt slippage. Plant installation to ensure the crusher is able to operate continuously consuming the FLA rating of the motor(s) with the equipment able to accept and discharge material freely. For secondary cone crusher applications to be used in closed circuit applications consult Superior for capacity adjustments. Feed size is determined by measuring the longest one-way dimension of the material sample.