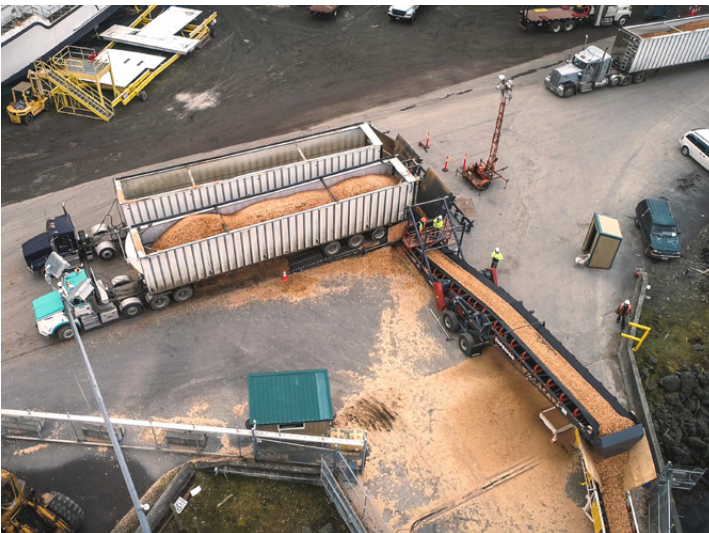




# RAZERTAIL<sup>®</sup> TRUCK UNLOADER

Unload From Truck to Target to Avoid Double Handling Material



DUAL LANE DOUBLE TRUCK TRAFFIC

## FEATURES

- » Maintain material quality from truck to stockpile or transportation system
- » Handles multiple truck/trailer styles which includes end, belly and haul truck
- » 2.0 to 3.0 minute truck cycle times for efficient unloading
- » Patented self-cleaning ramps dump any overflow material to hopper

Rock Face to Load Out<sup>®</sup>

 Patented Technology



## FEATURES



### 01/ CHEVRON® PULLEY

Ejects fugitive material for longer lasting pulleys and belting.

### 02/ TAIL PULLEY ACCESS

Access steps to operator platform is hinged for convenient access to tail pulley and take-up.

### 03/ SELF-CLEANING RAMPS [PATENTED]

Hydraulically-controlled ramps automatically or manually dump any leftover material into hopper.

### 04/ DRIVE OVER GRATES

Versus permanently fixed, these bolt on grates can be removed for maintenance.

### 05/ OPERATOR PLATFORM(S)

Equip on one or both sides of hopper area to monitor production.

### 06/ HYDRAULIC POWERFOLD

Inverted design protects cylinder rods from debris during operation.

### 07/ WRAP DRIVE

Accessible from ground level, the combination of pulleys creates better tensioning and reduced spillage.

### 08/ TRUSS FRAME

Versus channel frame designs, this robust design is less prone to bending.

### 09/ ADJUSTABLE HEIGHT DISCHARGE

Maintains structural rigidity under heavy materials and wind loads.

### 10/ ADJUSTABLE FLOW GATE

You set the height to control the flow of material from the hopper.

### 11/ IMPACT IDLERS

Rubber cushioned idlers absorb shock to protect belt from falling material.

## MODELS



### 48-INCH (1,219MM)

- » Up to 1,000 STPH (907 MTPH)
- » Up to 4-inch minus (101mm) materials lumps
- » 10-foot (3m) x 5-foot (1.5m) grate unload area
- » 5-inch (127mm) grate openings
- » Accommodates belly or end dump trucks
- » Dual lane upgrade for increased truck traffic



### 72-INCH (1,828MM)

- » Up to 1,500 STPH (1,339 MTPH)
- » Up to 4-inch minus (101mm) materials lumps
- » 10-foot (3m) x 7-foot (2.1m) grate unload area
- » 5-inch (127mm) grate openings
- » Accommodates belly or end dump trucks
- » Dual lane upgrade for increased truck traffic



### 48-INCH (1,219MM) HAUL TRUCK

- » Up to 1,000 STPH (907 MTPH)
- » Up to 6-inch minus (152mm) materials lumps
- » 12-foot (3.7m) x 5-foot (1.5m) grate unload area
- » 7-inch (178mm) grate openings
- » Accommodates rigid and articulated 30-ton haul trucks



### 72-INCH (1,828MM) HAUL TRUCK

- » Up to 2,000 STPH (1,814 MTPH)
- » Up to 8-inch minus (203mm) materials lumps
- » 15'-2" (4.6m) x 7-foot (2.1m) grate unload area
- » 9-inch (229mm) grate openings
- » Accommodates rigid and articulated 40-ton haul trucks

## FEATURES



**MANUAL ONBOARD RAMPS**



**EARTHEN RAMPS**



**ADJUSTABLE DISCHARGE**



**SELF-CLEANING RAMPS**



**OPERATOR PLATFORM(S)**



**DISCHARGE HOOD**

## TRUCK ACCESS

- » Hydraulic Onboard Truck Ramps
- » Manual Folding Onboard Truck Ramps
- » Earthen Ramps

## OPERATION

- » Folding Adjustable Height Discharge Conveyor
- » Onboard, Self-Contained Power
- » Wireless Remote Control
- » Operator Platform(s)
- » Hydraulic Landing Jacks
- » Discharge Hood

## MAINTENANCE

- » Self-Cleaning Ramps
- » Moxie® Rolls
- » Impact Idlers

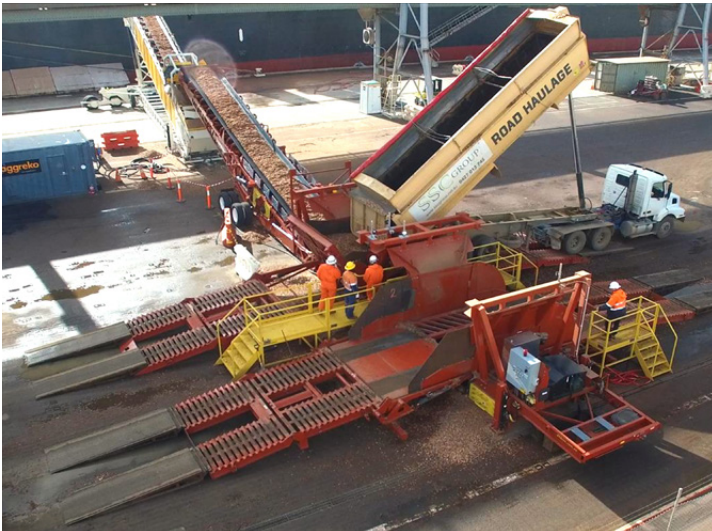
## APPLICATIONS



**BELLY DUMP**



**END DUMP**



**DUAL LANE (PATENTED)**



**RAILCAR LOADING**



**BARGE LOADING**



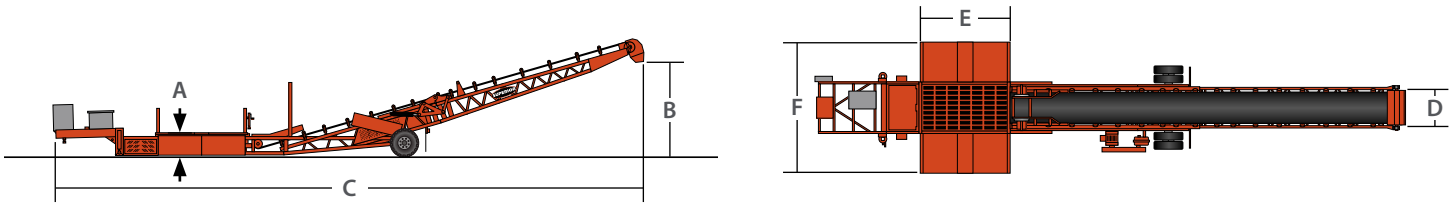
**SHIP LOADING**

## OPERATING SPECIFICATIONS

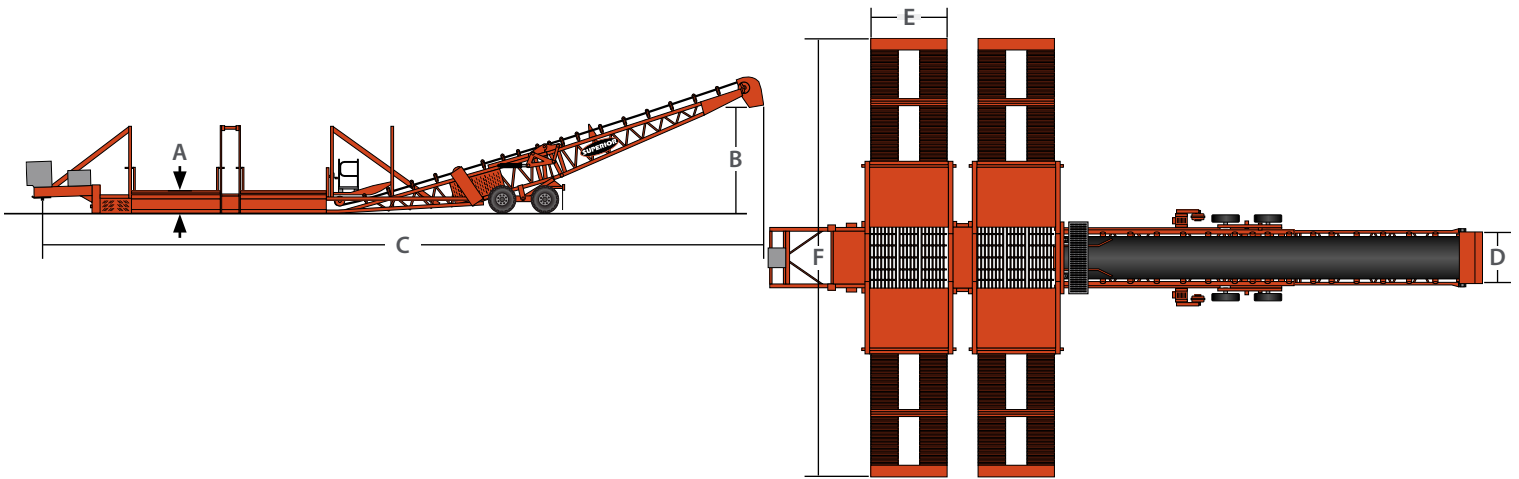
### 48-INCH BELT WIDTH CONVEYOR



### 48-INCH BELT WIDTH, WITH FOLDING DISCHARGE CONVEYOR



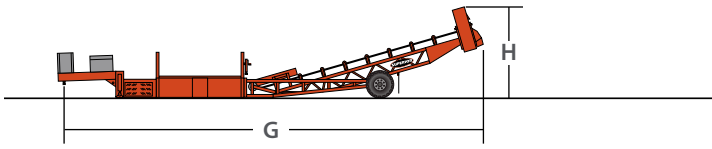
### 48-INCH BELT WIDTH, DUAL LANE WITH FOLDING DISCHARGE CONVEYOR



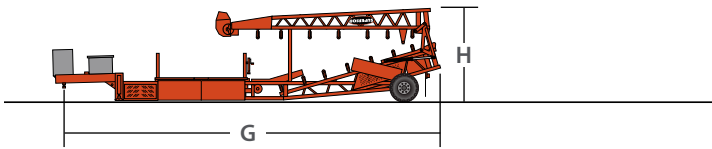
	48" (fixed height discharge)		48" (with adjustable discharge)		48" Haul Truck (not shown)		48" Dual Lane	
	Imperial	Metric	Imperial	Metric	Imperial	Metric	Imperial	Metric
Capacity	1,000 stph	907 mtph	1,000 stph	907 mtph	1,000 stph	907 mtph	1,000 stph	907 mtph
Maximum Material Size	4" Minus	Minus 101mm	4" Minus	Minus 101mm	6" minus	Minus 152mm	4" Minus	Minus 101mm
Cycle Time in Minutes	3.0 / 30 Short Tons	3.0 / 27 Metric Tonnes	3.0 / 30 Short Tons	3.0 / 27 Metric Tonnes	3.0 / 30 Short Tons	3.0 / 27 Metric Tonnes	3.0 / 30 Short Tons	3.0 / 27 Metric Tonnes
(A) Earth Ramp Height	25"	635mm	25"	635mm	28"	711 mm	29"	737mm
(B) Discharge Height	6'-1"	1.9 m	7'-2" - 11'-5"	2.2 - 3.5 m	7'-2" - 11'-5"	2.2 - 3.5 m	7'-2" - 11'-5"	2.2 - 3.5 m
(C) Conveyor Length	55'-1"	16.8 m	73'-3"	22.3 m	74'-11"	22.8 m	89'-2"	27.2 m
(D) Conveyor Width	5'-0"	1.5 m	5'-0"	1.5 m	5'-0"	1.5 m	5'-0"	1.5 m
(E) Load Ramp Width	10'-2"	3.1 m	10'-2"	3.1 m	11'-9"	3.6 m	10'-4"	3.1 m
(F) Load Ramp Length	22'-8"	6.8 m	22'-8"	6.8 m	22'-9"	6.9 m	55'-0"	16.8 m

## TRAVEL SPECIFICATIONS

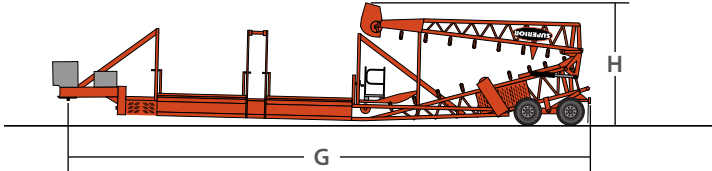
### 48-INCH BELT WIDTH CONVEYOR



### 48-INCH BELT WIDTH, WITH FOLDING DISCHARGE CONVEYOR



### 48-INCH BELT WIDTH, DUAL LANE WITH FOLDING DISCHARGE CONVEYOR



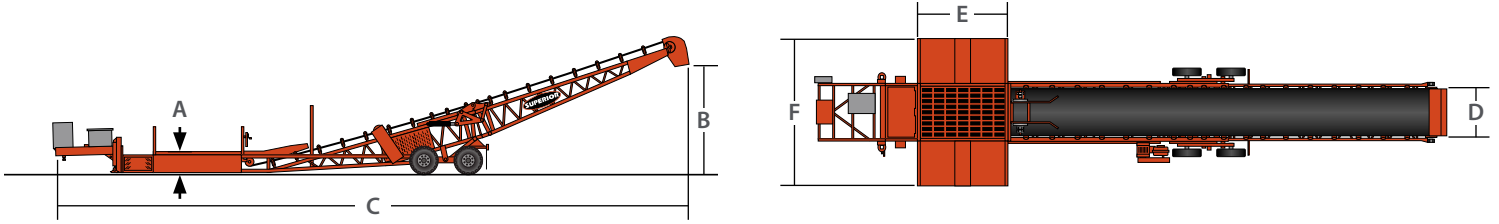
	48" (fixed height discharge)		48" (with adjustable discharge)		48" Haul Truck (not shown)		48" Dual Lane	
	Imperial	Metric	Imperial	Metric	Imperial	Metric	Imperial	Metric
(G) Travel Length	53'-4"	16.3 m	46'-8"	14.2 m	50'-5"	15.4 m	67'-8"	20.6 m
(H) Travel Height	12'-6"	3.8 m	12'-6"	3.8 m	12'-6"	3.8 m	15'-7"	4.8 m
Travel Width	12'-8"	3.9 m	11'-1"	3.3 m	11'-9"	3.6 m	10'-10"	3.3 m
Weight at Axle	16,100 lb	7,300 kg	19,500 lb	8,845 kg	22,000 lb	9,980 kg	N/A	N/A
Weight at Axle*	19,800 lb	8,980 kg	23,700 lb	10,750 kg	N/A	N/A	N/A	N/A
Weight at Axle**	N/A	N/A	24,800 lb	11,250 kg	N/A	N/A	54,500 lb	24,720 kg
Weight at Kingpin	11,300 lb	5,125 kg	13,100 lb	5,940 kg	17,600 lb	7,980 kg	N/A	N/A
Weight at Kingpin*	16,300 lb	7,395 kg	19,600 lb	8,890 kg	N/A	N/A	N/A	N/A
Weight at Kingpin**	N/A	N/A	22,300 lb	10,115 kg	N/A	N/A	45,500 lb	20,640 kg
Axes	Single		Single/Tandem		Tandem		Tridem	

\*Tri-Fold Ramps, \*\*Hydraulic Tri-Fold Ramps

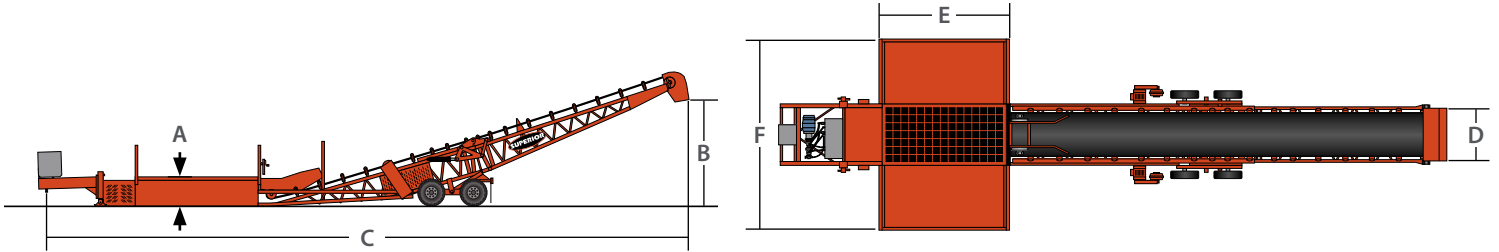
Rock Face to Load Out®

## OPERATING SPECIFICATIONS

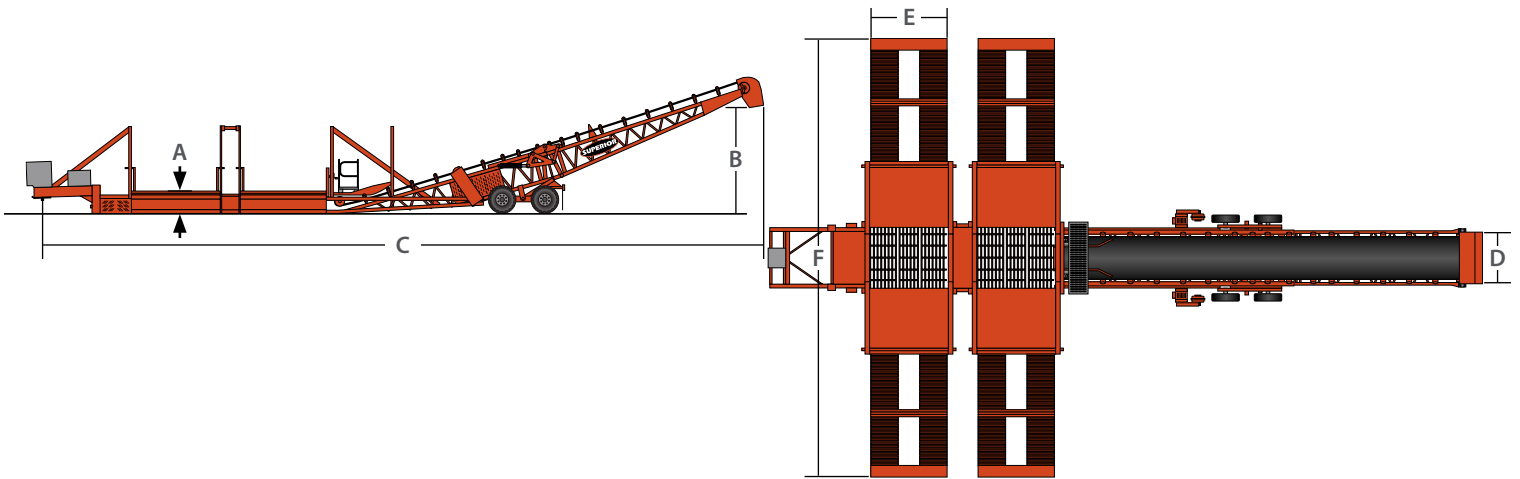
### 72-INCH BELT WIDTH, WITH FOLDING DISCHARGE CONVEYOR



### 72-INCH BELT WIDTH, HAUL TRUCK, WITH FOLDING DISCHARGE CONVEYOR



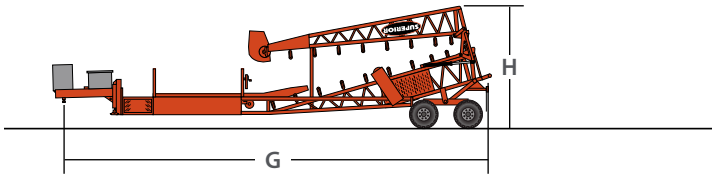
### 72-INCH BELT WIDTH, DUAL LANE WITH FOLDING DISCHARGE CONVEYOR



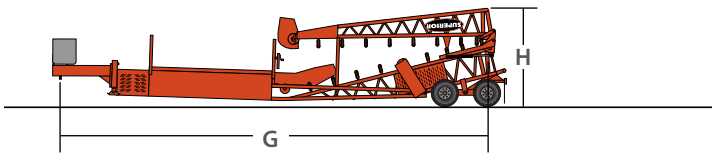
	72"*		72" Haul Truck*		72" Dual Lane*	
	Imperial	Metric	Imperial	Metric	Imperial	Metric
Capacity	1,500 stph	1,360 mtph	2,000 stph	1,814 mtph	1,500 stph	1,360 mtph
Maximum Material Size	4" Minus	Minus 101mm	8" Minus	Minus 203mm	4" Minus	Minus 101mm
Cycle Time in Minutes	2.5 / 30 Short Tons	2.5 / 27 Metric Tonnes	2.5 / 40 Short Tons	2.5 / 36 Metric Tonnes	2.5 / 30 Short Tons	2.5 / 27 Metric Tonnes
(A) Earth Ramp Height	25"	635mm	37"	939mm	25"	635mm
(B) Discharge Height	7'-9" - 12'-8"	2.3 - 3.8 m	7'-9" - 12'-8"	2.3 - 3.8 m	7'-9" - 12'-8"	2.3 - 3.8 m
(C) Conveyor Length	79'-4"	24.2 m	84'-3"	25.7 m	93'-1"	28.4 m
(D) Conveyor Width	7'-0"	2.1 m	7'-0"	2.1 m	7'-0"	2.1 m
(E) Load Ramp Width	10'-2"	3.1 m	15'-2"	4.6 m	10'-2"	3.1 m
(F) Load Ramp Length	24'-0"	7.3 m	24'-0"	7.3 m	56'-5"	17.2 m

## TRAVEL SPECIFICATIONS

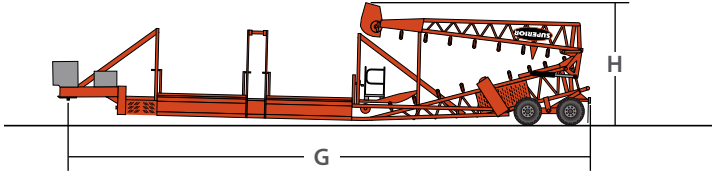
### 72-INCH BELT WIDTH, WITH FOLDING DISCHARGE CONVEYOR



### 72-INCH BELT WIDTH, HAUL TRUCK, WITH FOLDING DISCHARGE CONVEYOR



### 72-INCH BELT WIDTH, DUAL LANE WITH FOLDING DISCHARGE CONVEYOR



	72"*		72" Haul Truck *		72" Dual Lane *	
	Imperial	Metric	Imperial	Metric	Imperial	Metric
(G) Travel Length	52'-6"	16.0 m	57'-6"	17.5 m	66'-4"	20.2 m
(H) Travel Height	12'-6"	3.8 m	13'-7"	4.1 m	15'-11"	4.8 m
Travel Width	11'-9"	3.6 m	13'-10"	4.2 m	12'-3"	3.7 m
Weight at Axle	27,000 lb	12,245 kg	31,400 lb	14,250 kg	37,600 lb	17,050 kg
Weight at Axle*	29,200 lb	13,245 kg	N/A	N/A	44,000 lb	19,960 kg
Weight at Axle**	N/A	N/A	N/A	N/A	N/A	N/A
Weight at Kingpin	18,000 lb	8,165 kg	29,000 lb	13,150 kg	30,600 lb	13,880 kg
Weight at Kingpin*	24,200 lb	10,980 kg	N/A	N/A	39,800 lb	18,050 kg
Weight at Kingpin**	N/A	N/A	N/A	N/A	N/A	N/A
Axes	Tandem		Tandem		Tandem	

\*Tri-Fold Ramps, \*\*Hydraulic Tri-Fold Ramps

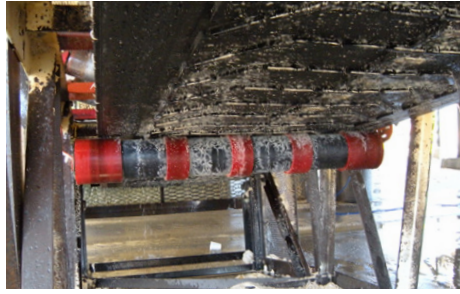
Rock Face to Load Out®

# COMPONENTS EXCLUSIVE TO SUPERIOR INDUSTRIES

## IDLER



**MOXIE®**



**URATHON®**



**NAVIGATOR®**

## ROLLS

HDPE sheds sticky material to prevent buildup on rolls for better belt tracking.

## RETURN ROLLS

Urethane sheds sticky material to prevent buildup on rolls for better belt tracking.

## RETURN TRAINER

Provides continuous belt alignment with no damaging side contact.

## EXTERRA® BELT SCRAPERS



**PRIMARY CLEANER**

Standard primary blade has up to 40% more urethane than competitors. Set for life (SFL) upgrade option.



**SECONDARY CLEANER**

Segmented chunks with tungsten carbide tips for long life.



**SFL DUAL CLEANER**

Primary and secondary blade on one pole. Maintains proper tension for life of blade.



**MINE DUTY**

Extra bulky blade for long lasting cleaning in heaviest applications.

# SUPERIOR'S APPLICATION-SPECIFIC IDLER SEALS



## APPLICATIONS

Wash or dredge processes. Frequent washdowns.

## BENEFITS

Special double contact seal defends bearing from moisture penetration.

## APPLICATIONS

Crushing and screening producing dust with minimal fines.

## BENEFITS

Oiled and contact seal protects bearing from dry particles and grit.

## APPLICATIONS

Overland or long distance material handling sites.

## BENEFITS

Seal reduces drag and roll resistance for less horsepower at startup/operation.

## APPLICATIONS

Washed sand, fines removal or dredging. Most extreme conditions.

## BENEFITS

Combination of design characteristics from wet and dry seals for ultimate bearing protection.

## APPLICATIONS

Traditional material handling not described above. Typically 80-90% of applications.

## BENEFITS

While testing our application specific models, we redesigned our standard for the best bearing protection yet.

For sales and service of Superior components, call (320)-589-2406



# STATIONARY DRIVE OVER TRUCK UNLOADER

Rugged, Custom-Designed Unloading for Fixed Applications

