



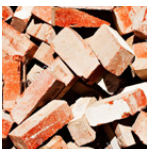
SENTRY® HORIZONTAL SHAFT IMPACTOR

Rugged, Resilient Design Capable of Crushing in Multiple Applications.

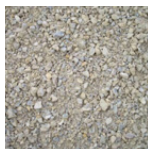
FEATURES

- » Designed with proper spacing inside chamber for processing larger feed sizes.
- » HSI's are able to accept a dirtier feed condition than compression crushers while processing a high tonnage of material.
- » Increased fines production compared to compression crushers.
- » Ideal for portable plants and allows for the adding of a third curtain or grinding path.
- » Backed by an industry-leading warranty, plus a service team committed to exceeding customer expectations.

APPLICATIONS



Clay and Brick
Crushing



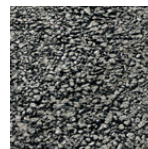
Quarried
Stone



Recycle
Concrete

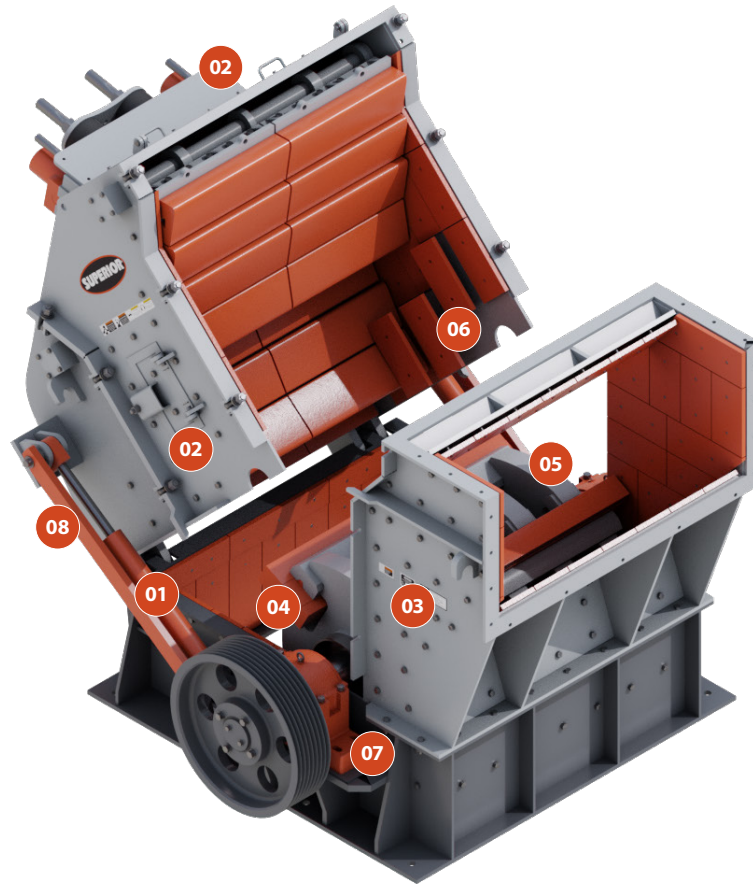


Cubical
Products



Recycled
Asphalt

Wheeled 
Stationary 



01/ HYDRAULIC OPENING & CLOSING

Safely and simply access internal components for inspection.

02/ MAINFRAME INSPECTION DOORS

Access the crushing chamber at additional locations including top, side and back inspection.

03/ REPLACEABLE UPPER FEED OPENING SECTION

High wear area is easily replaceable.

04/ BLOW BARS

Two or four blow bar rotor option with one or two-piece bars manufactured in a robust 4.5" (114mm) minimum manganese or chrome.

05/ FIXED BLOW BAR CLAMPING

Provides maximum clamping for best performance in hard rock applications.

06/ COMMONLY-SHAPED SIDE LINERS

Mix and match these liners to prolong wear life and decrease cost of replacement components.

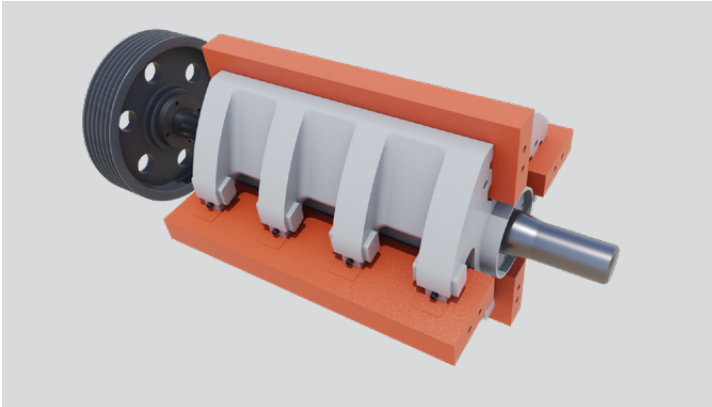
07/ OFF-THE-SHELF BEARINGS

Local sourcing speeds access to parts in emergency situations.

08/ CRUSHER LID SAFETY LOCK

Locks housing for safety during maintenance.

HIGHLIGHTS



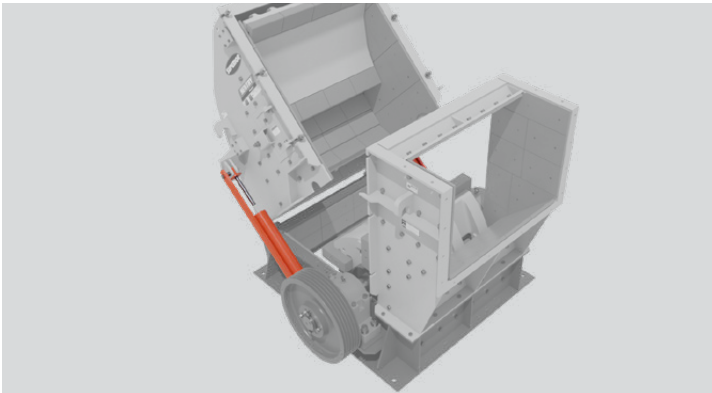
CAST CLOSED ROTOR DESIGN

- » Provides the highest inertia for maximum crushing force.



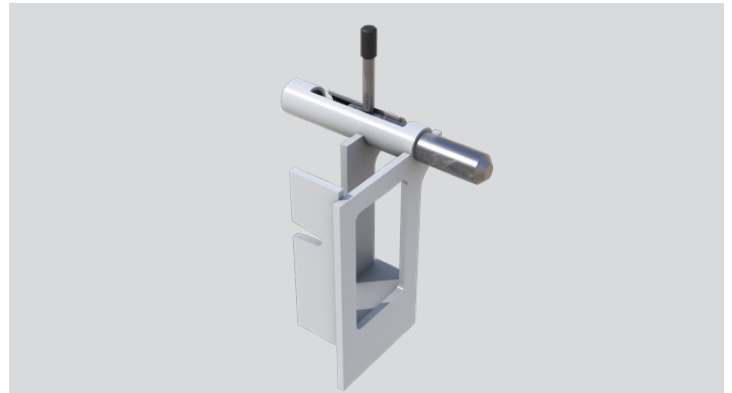
HYDRAULIC CURTAIN ADJUSTMENT

- » Easily adjust the crusher's closed side setting (CSS).



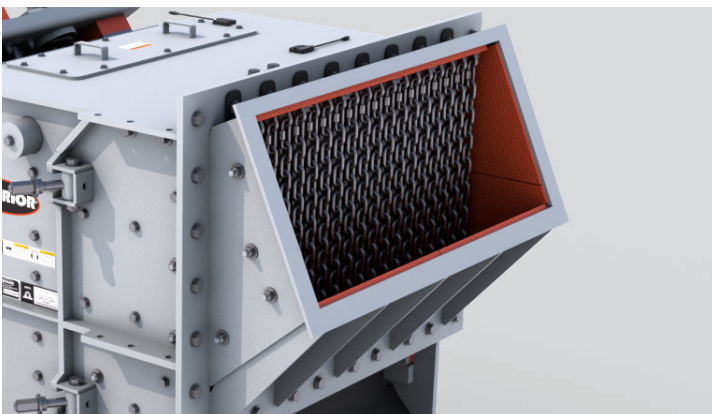
HYDRAULIC OPENING AND CLOSING

- » Safely and simply access internal components for inspection.



ROTOR LOCKING TOOL

- » Included with all machines, this device will improve safety.

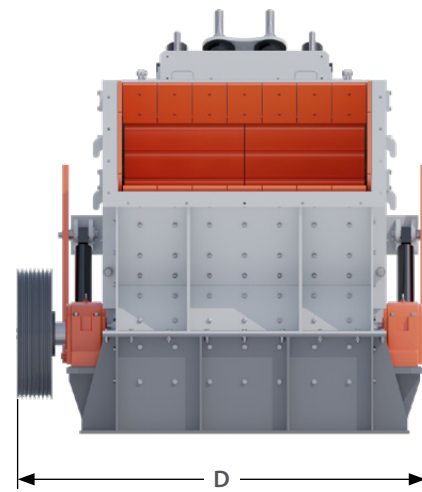
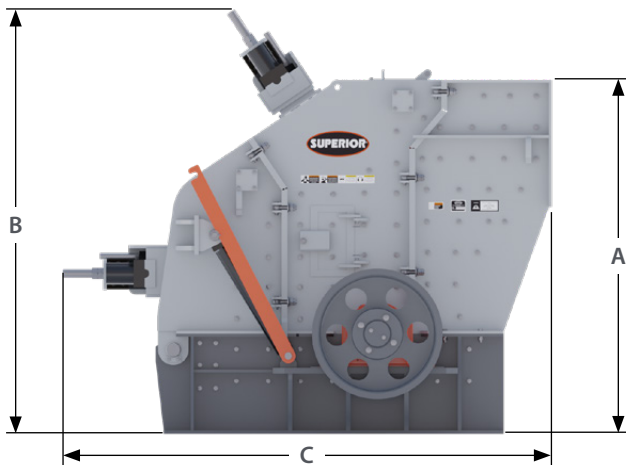


FEED HOOD EXTENSION

- » Assists in feeding material into crusher at the correct location and angle for proper crushing.

**2-YEAR/
6000 HR
WARRANTY**

SPECIFICATIONS



HSI CRUSHER DIMENSIONS

Model	A		B		C		D	
	in	mm	in	mm	in	mm	in	mm
SP5155	111	2,830	113	2,850	133	3,378	101	2,550
SP5565	116	2,950	117	2,980	142	3,600	105	2,660
SP6384	142	3,600	145	3,675	157	4,000	157	3,990
SS3936	88	2,240	83	2,100	106	2,680	85	2,150
SS4355	90	2,290	85	2,150	108	2,740	94	2,385
SS5165	115	2,920	96	2,450	132	3,365	112	2,850
SS5583	119	3,020	104	2,640	138	3,510	148	3,760
SS4355G	90	2,290	85	2,150	108	2,740	94	2,385
SS5165G	115	2,920	96	2,450	132	3,365	112	2,850
SS5583G	119	3,020	104	2,640	138	3,510	148	3,760
SR3936	90	2,280	85	2,150	106	2,680	85	2,150
SR4250	88	2,230	83	2,100	107	2,728	88	2,234
SR5165	115	2,920	103	2,620	135	3,420	112	2,850

TYPICAL PHYSICAL PROPERTIES

Model	Rotor Size (D x W)		Max Feed Size		Feed Opening		Capacity		Power		Weight	
	mm x mm	in x in	mm	in	mm x mm	in x in	mtph	stph	kW	hp	kg	lbs
SP5155	1,300 x 1,400	51" x 55"	600	24	1,257 x 1,435	49.5 x 56.5	250 - 350	275 - 385	250	350	18,500	40,785
SP5565	1,400 x 1,650	55" x 65"	800	32	1,150 x 1,680	45 x 66	355 - 500	390 - 550	350	500	26,000	57,332
SP6384	1,600 x 2,130	63" x 84"	1,000	39	1,600 x 2,150	63 x 85	700 - 900	770 - 990	500	700	42,000	92,813
SS3936	1,000 x 900	39" x 36"	400	16	650 x 950	26 x 37	80 - 150	90 - 165	110	150	9,500	20,948
SS4355	1,100 x 1,400	43" x 55"	450	18	850 x 1,450	33 x 57	150 - 250	165 - 275	185	250	12,500	27,563
SS5165	1,300 x 1,650	51" x 65"	500	20	750 x 1,700	30 x 67	250-400	275-440	350	500	23,800	52,481
SS5583	1,400 x 2,100	55" x 83"	600	24	850 x 2,150	33 x 85	300 - 500	330 - 550	600	800	33,000	72,767
SS4355G	1,100 x 1,400	43" x 55"	450	18	850 x 1,450	33 x 57	150 - 250	165 - 275	185	250	13,500	29,768
SS5165G	1,300 x 1,650	51" x 65"	500	20	750 x 1,700	30 x 67	250 - 440	275 - 484	350	500	25,000	35,000
SS5583G	1,400 x 2,100	55" x 83"	600	24	850 x 2,150	33 X 85	300 - 500	330 - 550	600	800	35,000	77,178
SR3936	1,000 x 900	39" x 36"	500	20	650 x 950	26 x 37	80 - 150	90 - 165	110	150	10,500	23,153
SR4250	1,070 x 1,270	42" x 50"	500	20	834 x 1,300	33 x 51	120-200	130-220	185	250	12,615	27,811
SR5165	1,300 x 1,650	51" x 65"	800	32	1,200 x 1,650	48 x 65	250-400	275-440	315	400	25,800	56,891

Feed size is determined by measuring the longest one-way dimension of the material sample.

Projected crusher capacities are based on a material having a work index of 12-14, with a bulk density of 100 lbs/ft³ (1.6 mt/m³). The feed grading must have less than 10% passing the crusher setting. The crusher drive assemblies are to be maintained in good working order with the ability to apply all available horsepower without drive belt slippage. Plant installation to ensure the crusher is able to operate continuously consuming the FLA rating of the motor(s) with the equipment able to accept and discharge material freely. For secondary cone crusher applications to be used in closed circuit applications consult Superior for capacity adjustments.