



TRAILBLAZER® CONVEYOR

Pre-Assembled Portable Groundline Conveyor Folds into Road Portable Load.



FEATURES

- » 500' of overland conveyor in one load
- » Completely set up and operating in a single shift
- » Less overall horsepower than jump conveyors
- » Easy to relocate
- » Single transfer point reduces maintenance

FEATURES



01/ KINGPIN

Connects to fifth wheel hitch for towable package.

02/ SNUB PULLEY

Improves belt traction around drive pulley and reduces damaging tension.

03/ GRAVITY TAKE-UP

Ensures adequate belt tension near the drive pulley to avoid slippage.

04/ LIFTING EYE

Installed at joint points that require lifting assistance.

05/ CONVEYOR HINGE

Structure jointed in 10'-6" (3.2m) sections for folding and unfolding. (Patented)

06/ SUPPORT STANDS

Conveniently stored over fifth wheel hitch during transportation.

07/ V-PLOW

Shields tail pulley and drive from onslaught of damaging fugitive material.

08/ SELF-ALIGNING IDLER

Concave-shaped urethane side

guide rollers avoid abusing belting.

09/ NAVIGATOR® RETURN TRAINER

Constantly guides and center belt to present misalignment.

10/ CHEVRON® PULLEY

Ejects fugitive material for longer lasting pulleys and belting.

HIGHLIGHTS



84-FT (25.6M) PACKAGE



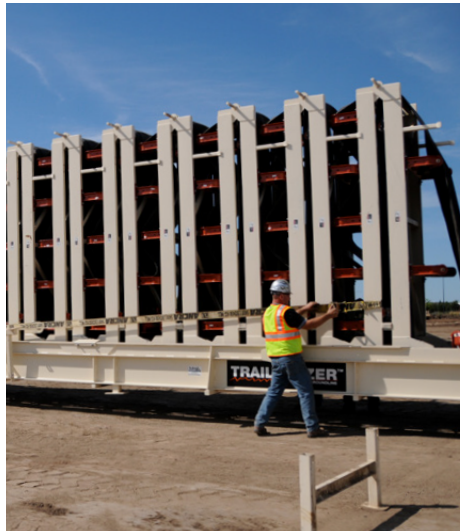
QUICK SET-UP



ROLL ON OR OFF DOVETAIL



SUPPORT STANDS



SECURE FOLDED SECTIONS



RECEIVING HOPPER



CRANKDOWN LANDING GEAR

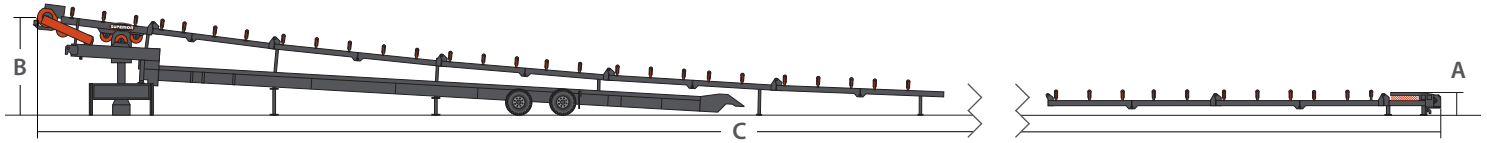


AREA GUARDING

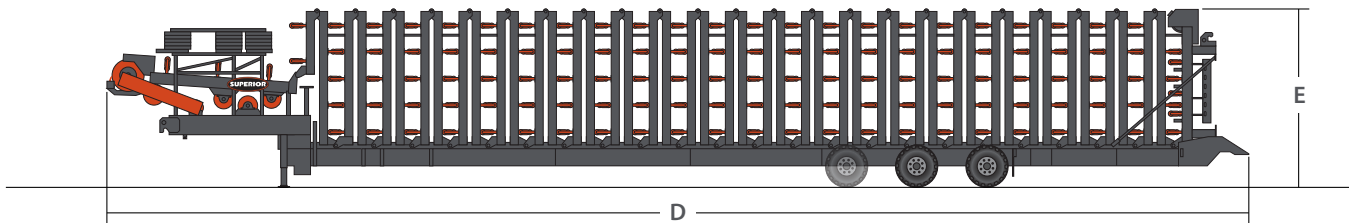


500-FT (150M)

SPECIFICATIONS



	48" x 250'		36" x 500'		42" x 500'	
	ft x in	m	ft x in	m	ft x in	m
OPERATING SPECIFICATIONS						
(A) Feed Height to Hopper	4'-5"	1.3	4'-2"	1.3	4'-4"	1.3
(B) Discharge Height to Center of Head Pulley	12'-9"	3.8	12'-6"	3.8	12'-6"	3.8
(C) Conveyor Length	250'-0"	75.6	500'-0"	152.4	500'-0"	152.4
CAPACITIES						
	STPH	MTPH	STPH	MTPH	STPH	MTPH
Capacity	2,000	1,814	1,000	907	1,500	1,360



	48" x 250'		36" x 500'		42" x 500'	
	ft x in	m	ft x in	m	ft x in	m
TRAVEL SPECIFICATIONS						
(D) Travel Length (m)	56'-0"	17.1	89'-4"	27.2	92'-0"	28.0
(E) Travel Height (m)	14'-0"	4.2	14'-0"	4.3	14'-0"	4.3
Travel Width (m)	11'-11"	3.6	11'-4"	3.5	11'-10"	3.6
WEIGHTS						
	lbs	kg	lbs	kg	lbs	kg
Weight at Axle (kg)	40,000	18,144	41,500	18,824	47,500	21,545
Weight at Kingpin (kg)	35,500	16,102	28,000	12,700	40,000	18,143